

Newsletter of *On the Move's* Newfoundland and Labrador Field Team

on the move partnership



On the Move on the Rock

June 2015

On the Move on the Rock is a biannual newsletter that aims to share the progress of ongoing research, training and activities by members of the NL field component of the *On the Move* Partnership.

Research for the *On the Move* Partnership is taking place over 7 years all across Canada. This newsletter highlights the exciting research being conducted here in Newfoundland and Labrador.

The NL field component team is comprised of university researchers, students and partners, including government departments, community organizations, industry and labour. Together we hope to better understand employment-related geographical mobility (for example, long distance commuting) in our province, how it is changing and how it impacts individuals, families, businesses and communities.

Inside this issue

What's On the Go?1

A list of upcoming *On the Move* events.

Our Researchers2

Lachlan Barber and Marit Aure introduce themselves and their research.

Partner Profile: *The Harris Centre*.....2

On the Move Goes to Congress 20153

A survey of the presentations made by the NL team at Congress of Humanities and Social Sciences.

NL OTM Project Update4

Nicole Power and Kelly Vodden discuss the progress of the NL team up to date.

Picture Profile5

Pictures from the field!

What's On the Go?

A network of team members and other researchers interested in housing is organizing a **Housing Symposium** under the theme of *Housing and the Mobile Workforce in Newfoundland and Labrador* that will take place in November 2015. For information about the Housing Symposium contact On the Move team researchers Dr. Sandrine Jean and/or Dr. Kelly Vodden.

On the Move's Barb Neis and Michael Haan were among the presenters at On the Move Partner Vanier Institute of the Family's "Families in Canada Conference 2015," happening in Ottawa June 10 and 11. Check out news from the conference organizers below or visit the conference website at: http://www.vanierinstitute.ca/families-in-canada-conference-2015_index

Blogging On the Move!

Interested in contributing to the On the Move blog at onthemovepartnership.ca? We'd like to hear from you! Contact Danielle at devereau@mun.ca

Our Researchers

Lachlan Barber



How do people working on construction projects related to Newfoundland's oil and gas sector respond to changes in the location of their employment that are inherent to the phasing of such projects? What are the consequences of long-distance commuting in this industry for families, communities and for rural and urban Newfoundland? What can insights regarding employment-related

geographical mobility in this context contribute to broader discussions around mobility, policy and sustainable development? These are just a few of the questions that Lachlan Barber hopes to answer as a post-doctoral research fellow with the On the Move Partnership at Memorial.

Having begun work with the project on a part-time basis in September, Lachlan (working with Barb Neis) began interviews with key informants in early December. This first phase of the research is nearing completion and oral history interviews with commuting workers are beginning soon. As a geographer, Lachlan has been thinking about mobility for a long time. He is particularly interested in the relationship between mobility and "place" - that ubiquitous, common sense idea that may refer to a city, town or locale, but more precisely evokes the cultural meanings attached to locations that accumulate over time through everyday activities and on more official registers. Lachlan arrived at Memorial fresh from defending his doctoral research on urban politics in Hong Kong, which explored how transnational migration and mobility affect policy-making processes and civil society involvement in urban and community planning. He is excited to continue working on some of the core themes that have animated his recent work, and to have the opportunity to pursue directions, such as labour, construction and regional development, that have been long-standing interests. Lachlan has enjoyed his time in Newfoundland thus far and is looking forward to continuing to meet new friends and colleagues in St. John's and beyond!

Marit Aure

Dr. Marit Aure is a researcher from Norway and is one of the international connections of the On the Move project. She specializes in international and national migration studies, looking at rural and coastal communities and the effects of mobility through a gender perspective. Marit visited Canada for Congress 2015, spending over a week in Newfoundland before she flew to Ottawa. While in St. John's, Dr. Aure spoke with Taylor Stocks about her most recent research.

Marit's work on migration provides the background for her current studies on mobility within the petroleum industry. Her focus is on the town of Hammerfest, where a Norwegian oil company opened up a processing facility in 2002, and more are about to start. She is exploring a multiplicity of movements- from commuting to moving permanently, to extended travel and shift rotations, in all levels of staff. Questions of masculinity are at the forefront of her research, as she investigates how people negotiate the intersection between family and work life, how they talk about their decisions to enter or continue work related mobility, and how mobility affects their household.

Dr. Aure says that both countries could learn a lot from each other in terms of worker mobility. While there are a number of similarities between Norway and Canada, she points to institutional differences as a main reason why practices vary. In Norway, there is a parental leave quota for fathers; if not met, the father forfeits the money! In addition, a typical cycle is 2 weeks on, 4 weeks off, which allows for more a gender-equitable household with fathers being able to spend a lot of time with their kids. Even during their commutes, men will sit in the airport lounge together and discuss home life. This marks a change from even 20 years ago in Norway, and certainly a difference from Canada! Perhaps we could learn a thing or two from the institutional policies of Norway around worker mobility to help navigate the gender inequalities that we experience in this province, this interviewer thinks!

Knowledge is *On the Move* with the Harris Centre

If you ask people around the Harris Centre what they do, most will boil it all down to “knowledge mobilization” - the comparison to the Ed Sullivan show is often quoted “we’re the stage, not the talent”. When it comes to the Harris Centre’s involvement with the On the Move Partnership, we’ve been providing a stage for discussion and knowledge mobilization even when the project was just an idea.

When Dr. Neis pulled together her team for On the Move, the Harris Centre was invited to be a knowledge mobilization partner, and Dr. Rob Greenwood, Executive Director, Public Engagement and the Harris Centre at Memorial University, was asked to be a co-applicant, collaborating on the Community and Regional-level Impacts component with Dr. Kelly Vodden.

On this specific component, Drs. Greenwood and Vodden have established a solid relationship with community, government and industry partners, organizing workshops in the Clarenville, Long Harbour, and Placentia region- the most recent of which involved a lengthy flat-tire-induced roadside story-telling and project-planning session.

In addition to the On the Move-specific workshops, the Harris Centre has also integrated the On the Move Partnership into its pre-existing knowledge mobilization vehicles. Four times a year, the Harris Centre works with community leaders and Memorial representatives to organize a workshop in various regions around the province- for many of these regions the idea of work-related mobility is one of critical importance. Guided by input from the community leaders, three of these Regional Workshops (Irish Loop, Placentia and Marystown) in recent years have highlighted the On the Move Partnership and sparked extensive discussions about how work-related mobility is impacting individuals, families and communities.

The Harris Centre also holds eight large forums on key public policy issues each year, called Memorial Presents. On December 4, 2012, Dr. Neis and seven On the Move collaborators presented at a Memorial Presents in St. John’s. Approximately 70 people attended the event, with another 123 tuning into the live webcast. The session was digitally recorded and is still available to view on the Harris Centre website.

The most recent knowledge mobilization endeavour took place on May 19-20 - the Harris Centre hosted the Atlantic Provinces Transportation Forum, with a focus developed in partnership with On the Move Partnership, “Transportation for Life, Work & Play: The Movement of People To, From and Within Atlantic Canada.” The conference discussion examined how we can adapt and enhance the transportation systems within Atlantic Canada to improve the experience of people who travel to, from and within the region. Dr. Sharon Roseman represented the On the Move Partnership on the planning committee for the conference, and both she and Dr. Neis participated as panelists. Following the conference, Dr. Greenwood also participated in the On the Move Workshop in Ottawa in June, and presented with Dr. Vodden and Dr. Sean Markey.

Our mandate at the Harris Centre is to facilitate and coordinate regional development and public policy activities at Memorial is to provide a stage for ideas and discussions that impact our communities. Our work with the On the Move Partnership has been a great example of that to date, and we will continue to find new stages to mobilize the critical research coming from the project and new forums to fuel the discussion!



On the Move Goes to Congress!

TAYLOR STOCKS

At the end of May, a number of On the Move researchers headed to Ottawa for Congress of the Humanities and Social Sciences 2015. Congress consists of approximately 70 scholarly associations, each holding their annual conference under one umbrella. Now in its 84th year, Congress brings together academics, researchers, policy-makers, and practitioners to share findings, refine ideas, and build partnerships that will help shape the Canada of tomorrow.

There were over twenty five researchers presenting at Congress from the different projects within On the Move, eight of which are connected to the NL component. Our Newfoundland and Labrador team presented to the Canadian Works and Labour Studies (CAWLS) association and to the Canadian Sociological Association (CSA). Lachlan Barber and Barbara Neis presented “The Recent History of “Special Projects” and Labour Mobility in Newfoundland and Labrador on June 5 to CAWLS. Within the CSA, Christine Knott explored “Employment-Related Geographic Mobility in a Seafood Processing Community”, Stephanie Sodero presented “Navigating disruption: Mobile society and Hurricanes Juan, Igor and Sandy”, Marit Aure examined “Timely Practices of Masculinity and Mobility”, Kathy Fitzpatrick investigated “What’s Mobility got to do with it?: Newfoundland Home Care”, Nicole Power presented “Is a Mobile Worker the Ideal Worker? Media Representations of Skilled Trades Apprentices and Young Workers”, and Joshua Barrett discussed “Resource Towns to No Towns?: The Evolution of Commute Work from the 1950s to Present and How it Impacts Communities.”

There was also a well-attended public event, “On the Move: Temporary Foreign Worker Policy in Canada,” co-sponsored by On the Move, CBC Ideas, and the Federation for the Humanities and Social Sciences. The event was moderated by Paul Kennedy and featured five On the Move researchers as panelists. Stay tuned to our website at www.onthemovepartnership.ca and twitter account @OTMpartnership for further details regarding broadcast dates.

NL OTM Update

NICOLE POWER AND KELLY VODDEN

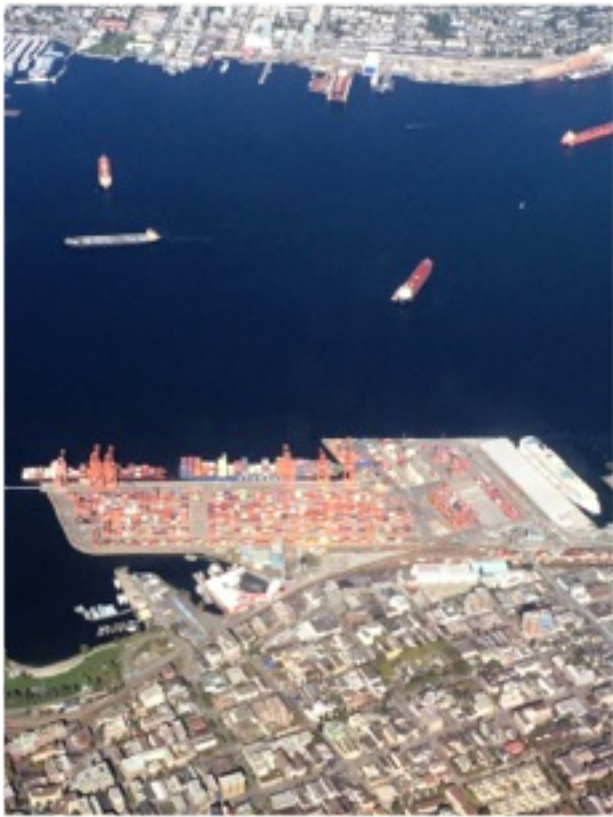
A complex story of the types and extent of employment-related geographical mobility is beginning to develop from our field research. As researchers are gearing up for another busy field season, it’s a good time to reflect on some emerging themes. These include:

1. There is a range of ERGM across and within sectors;
2. Structural drivers and the regulatory context are significant in shaping ERGM;
3. ERGM impacts how work is organized and workers' wellbeing;
4. ERGM has different effects on women and men, as well as different family forms;
5. Communities are being impacted by ERGM but have limited ability to respond.

For example, long distance commuting to rural industrial projects means increased traffic on our highways and wear and tear of road infrastructure, with implications for the safety of commuters. Interviews with workers in the oil and gas sector suggest that fly-in/flyout operations tend to offer good incomes but require extended separation from family and friends. While mobile phones and internet access enable family members to stay in touch, access to such technology is inconsistent across worksites. Communities that have an influx of mobile workers may experience spin-off business opportunities and increases in housing prices and rent, but not all members of the community benefit from these developments.

These are just some of the emerging themes to date. To read more about our research findings, visit http://www.onthemovepartnership.ca/wp-content/uploads/2014/12/HMHALL_Report-Final.pdf. There you will find a report comparing the E-RGM related to nickel processing in Long Harbour, NL and Sudbury, ON. Stay tuned for more to come!

Picture Profile



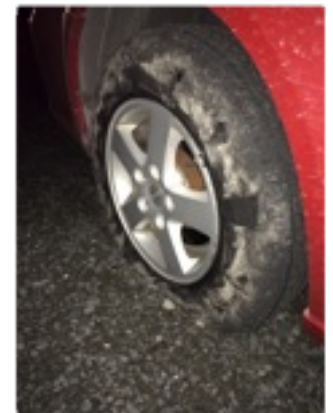
Vancouver Shipping Port
(September 2014)
Credit: Heather Hall



Josh Barrett, Diane Royal, Taylor Stocks, and Kelly Vodden
Waiting Patiently for a Tire Change
(December 2014)
Credit: Heather Hall



Flying in Labrador
(September 2014)
Credit: Heather Hall



Ravaged Tire after OTM
Community Meetings
(December 2014)
Credit: Heather Hall

What We've Been Doing...

- On the Move Partnership Project
Director Dr. Barb Neis was a guest on the CBC Radio call-in programme Maritime Connection on Sunday March 8, examining "How does your family adapt when one of you has to leave home to work?" Listen to the archived show online at <http://www.cbc.ca/maritimeconnection/> under Listen, March 8, 2015.
- Dr. Sharon Roseman is the project lead focusing on ferry employment and the use of ferries to commute to work. Diane Royal's research, supervised by Dr. Roseman, will use key ethnographic tools to explore the household and community-level impacts of employment-related geographical mobility for residents of Bell Island, Newfoundland and Labrador. This research takes a feminist approach to people's mobilities by considering both paid employment and the unpaid work that goes into maintaining households of commuting workers on Bell Island. Examples of unpaid work include caregiving and food provisioning and preparation. Diane will undertake five months of fieldwork on Bell Island from April-September, 2015, with some limited follow-up research in order to partially capture seasonal changes and the impact of a new ferry promised for 2016.
- Dana Warren recently published "On the Move- Perspectives on the Project." on the OTM blog, exploring how the project opened her up to consider the many complexities and permutations of worker mobility. Read it here: onthemovepartnership.ca/on-the-move-perspectives-on-the-project/
- Jason Foster investigates the ramifications of the changes to the Temporary Foreign Worker Programme that occurred on April 1st, 2015 found here: onthemovepartnership.ca/the-temporary-foreign-worker-program-where-to-from-here/

Questions about the On the Move Project?

Please feel free to contact:

Dr. Nicole Power, Department of Sociology,
MUN, npower@mun.ca

Dr. Kelly Vodden, Environmental Policy
Institute, Grenfell Campus
kvodden@grenfell.mun.ca

Newsletter Editor: Taylor Stocks